

Which illume suits your home?

There are four sizes in the standard illume range and additional sizes are available in the premium trade packs.

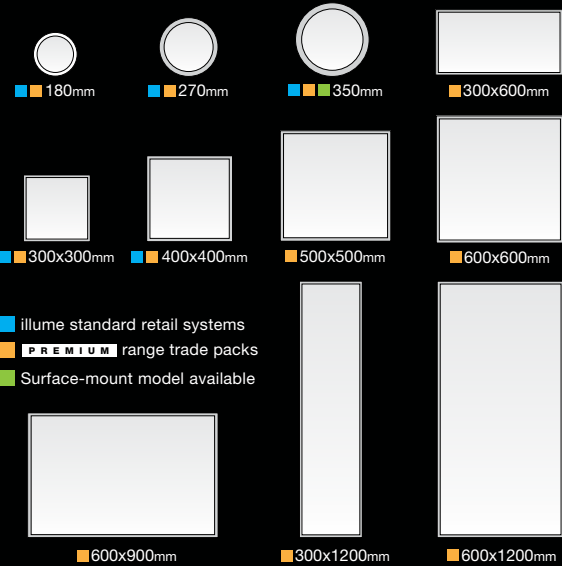
Choosing the right illume system for your space is an important step as different models are better suited to different locations in your home.

When choosing the right system it's a good idea to visualise the spaces in your home that aren't getting enough light or are dimly lit and then choose a model that is going to offer the most suitable output to complement that area.

Some ideal common locations that the illume system is suited to include: Hallways, entrances, walk in robes, bathrooms, ensuites and the restroom. But the system will work just about anywhere. From kitchen pantries to your garden shed or garage. Even the basement...

The smaller models are suited to smaller spaces, pantries and restrooms. Larger models complement and effectively brighten more spacious areas.

What sizes are available?

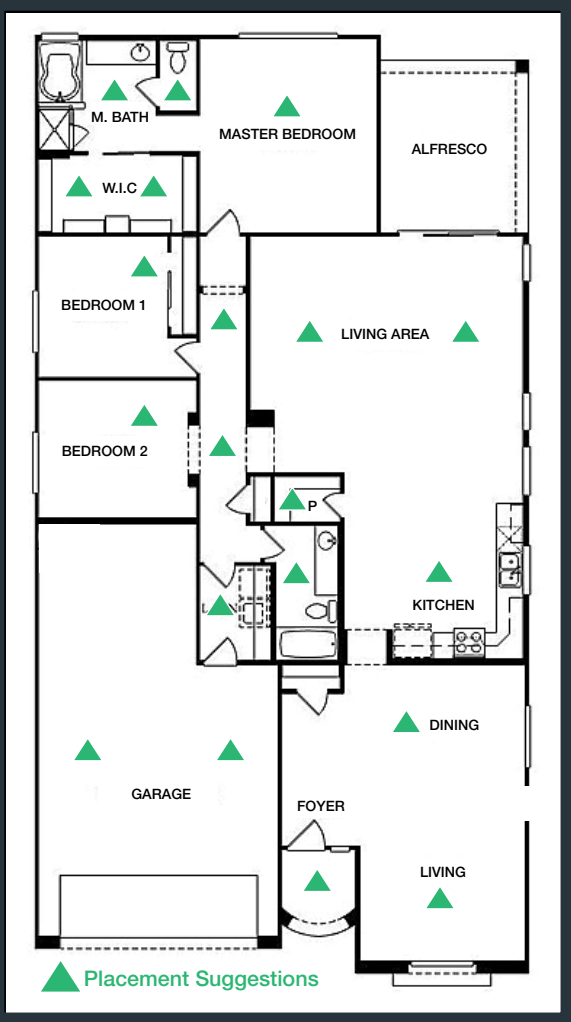


PREMIUM

illume premium trade packs offer a more robust system designed for building and commercial application.

With many upgraded features these packs also have the facility to connect multiple skylights to the same power source.

Examples of ideal illume placement



illume area suitability (Per skylight panel)

180mm Round - 2m ²	400mm Square (Premium) - 9m ²
270mm Round - 6m ²	500mm Square - 11m ²
350mm Round - 10m ²	600mm Square - 13m ²
350mm Round (Surface-mount) - 10m ²	300x600mm Rectangular - 10m ²
350mm Round (Premium) - 11m ²	600x900mm Rectangular - 20m ²
300mm Square - 5m ²	300x1200mm Rectangular - 20m ²
300mm Square (Premium) - 6m ²	600x1200mm Rectangular - 32m ²
400mm Square - 7m ²	

Frequently asked questions

Can I switch off the illume system?
There's no need to, as the illume system automatically illuminates and darkens at dawn and dusk and emits no light after dark, just as a traditional skylight would. For those who would like a bit more control, switchable control systems and after dark battery back-up options are available.

Does illume need mains power or batteries?
All illume systems are designed to work without the need for batteries or mains power. However, both battery back-up systems and switchable AC current options are available by special order.

Can multiple light panels run on the same system?
Not in the retail kit, as the solar collector, control module and skylight panel come in matched pairs. The illume premium range does have the facility to run multiple panels from the same source (Available by special order).

How do I attach the solar collector to the roof?
The collector comes with four brackets which can be attached to the roof rafters under tiles, or easily fixed to a metal deck roof.

How does the auto-adjustment system behave?
The system gradually illuminates as the daylight hours start. In full sunlight the system shines brightly and the system dims accordingly in overcast conditions or cloud cover. This means that illume emits light with the same familiar light transitions as a traditional skylight.

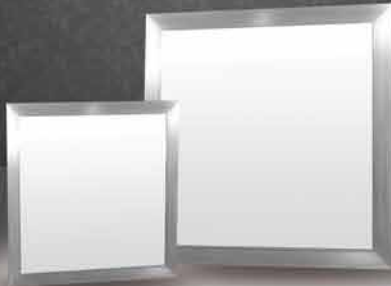
Can the skylight be recessed into the ceiling?
Yes, provided you have enough clearance. illume can be installed to mimic the look of a traditional recessed skylight.

Does the system illuminate in moonlight?
No. The system draws no power after dark.

Where can I find more information on illume?
Product specifications and other content is available on our website www.illumeskylights.com.au - You can also view an instant video demonstration via your mobile device by scanning the QR code found on the front of this booklet with your installed QR scanner app.



A Shaftless™ skylight system that you can install anywhere.



Find out more - www.illumeskylights.com.au



For more information on illume™
Ph: (03) 9768 5777
Email: illume@kimprod.com.au
Web: www.illumeskylights.com.au



Scan with your phones QR app to watch a demo.

Think you can't install a skylight?
Think again...

KIMBERLEY™
Manufactured by
Kimberley Products Pty Ltd

PROUDLY
AUSTRALIAN
OWNED
AND OPERATED
SINCE 1955



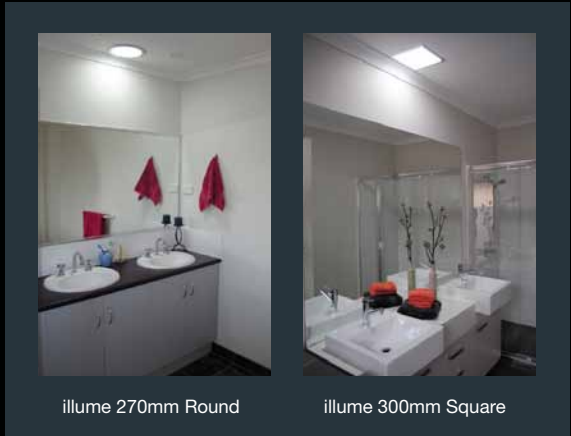
Shaftless™ skylights that install anywhere...

illume™ adds the ambience of sky lighting to buildings where under normal circumstances a traditional skylight could not be fitted.

The clever system design allows installation on any level of a home without the need of a light shaft, flexible tube or a large roof cavity to be cut-out.

If you are building, renovating or designing a living space, you can now easily include the luxury of sky-lighting in areas that you hadn't thought you could.

illume looks like a skylight.
illume behaves like a skylight.
But, illume doesn't install like a skylight...



How does it work?

As with traditional skylights, the light emitted from an illume system is also affected by the presence of sunlight, cloud-cover or overcast conditions.

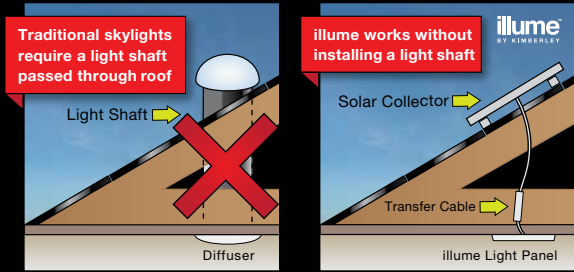
This is by way of illume's fully automated control system which ensures that the light emitted by an illume is in harmony with external ambient light conditions.

Think you can't install a skylight?

illume Shaftless™ skylights don't require installation locations that have direct roof access. An illume system can also easily be installed in one third the time it would take to install a traditional or conventional system.

Surface-mount models

Some sizes in the range carry surface-mount alternatives that suit some trickier ceiling types, or where an even simpler install option is desired. *Surface-mount models can be identified below by the addition of an (S) to their product codes.*



Standard Range (Retail installation kits)

Code	Panel Size	Lumens*	Profile Colour	Form Factor
KIS1010	180mm	450-540lm	White	Round
KIS1012	270mm	970-1050lm	Silver	Round
KIS1014	350mm	1425-1500lm	White	Round
KIS1014S	350mm	1565-1650lm	White	Round Surface Mount
KIS2010	300mm	660-720lm	Silver	Square
KIS2012	400mm	970-1050lm	Silver	Square

*Direct sunlight. Specifications are subject to change without notice.
(S) At the end of product codes denotes surface-mount model.

PREMIUM (Special order trade packs)			
See over for details			
Panel Size / Form	Lumens*	Panel Size / Form	Lumens*
180mm Round	450-540lm	500mm Square	1820-1950lm
270mm Round	1010-1070lm	600mm Square	2100-2250lm
350mm Round	1995-2100lm	300x600mm Rectangle	1400-1500lm
350mm Round Surface Mount	1565-1650lm	600x900mm Rectangle	3080-3300lm
300mm Square	980-1050lm	300x1200mm Rectangle	3080-3300lm
400mm Square	1330-1420lm	600x1200mm Rectangle	4550-4870lm

*Direct sunlight. Specifications are subject to change without notice.

illume works where others can't.



Why install an advanced skylight?

- Works without batteries

► No mains power required

► Easy to install

► No running costs

► No light shaft required

► No UV emissions

► Doesn't attract insects
- Auto operation

► Works in multi-level dwellings

► No heat transfer

► No carbon footprint

► No noise transfer

► No leaks

► No dead insects (Sealed unit)

Lumens? Watts? How do they compare?

Household Light Comparison	
Incandescent Light Bulb	illume BY KIMBERLEY
WATTS	LUMENS
40	450
60	800
75	1,100
100	1,600

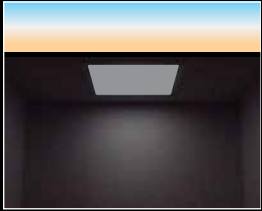
Source: energystar.gov



For more information on illume™
Ph: (03) 9768 5777
Email: illume@kimprod.com.au
Web: illumeskylights.com.au



How does the lighting system behave?



MORNING / DAY BREAK

In this example of an illume installation, at the start of each day the illume system progressively illuminates as the conditions lighten outside.



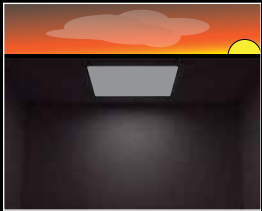
OVERCAST / CLOUDCOVER

In overcast or cloudy conditions the system adjusts light output to mirror external light levels. Under normal circumstances illume still provides ample light during overcast conditions with only subtle automatic adjustments that are in-tune with outdoor light levels.



DAYTIME / DIRECT SUNLIGHT

In direct sunlight illume takes full advantage of the suns energy with brilliant in-sync light levels that illuminate even the darkest spaces in your home.



EVENINGS / SUNSET

As with early morning light adjustments that welcome in the new day, illume behaves in a similar way in the evenings by gradually powering itself down during the final hours of daylight.



AFTER DARK

Just as a traditional skylight, illume emits no light after dark. If you would like more control of your illume system by night or day, optional switched and battery back-up systems are available by special order.